

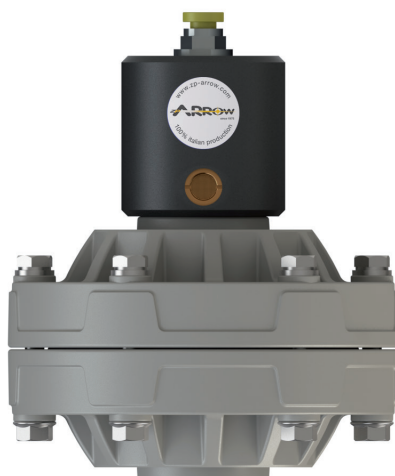
DAW-HQ20

DATI TECNICI TECHNICAL DATA

Connessioni Fluidi: 3/4" BSP
Fluid connections

Connessione aria: 6 mm
Air connection

Pressione Max: 8 bar
Max delivery head



DAW-HQ20 PVDF+CF

LxH 119x143
 kg 0,7
 Temp. max 95°C
 Temp. min -20°C



DAW-HQ20 POMc

LxH 119x143
 kg 0,65
 Temp. max 80°C
 Temp. min -5°C



**APPLICABILE A:
APPLY TO:**

**PAW-HQ8
PAW-HQ20
PAW-HQ35**

DAW-HQ20 PP

LxH 119x143
 kg 0,6
 Temp. max 65°C
 Temp. min -4°C

DAW-HQ20 AISI

HxLxP(W) 119x143
 kg 1,9
 Temp. max 95°C
 Temp. min -20°C



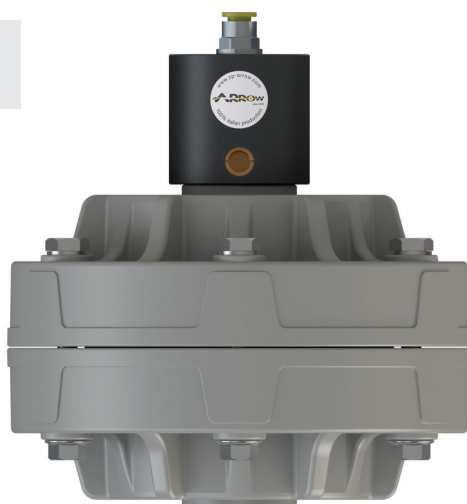
DAW-HQ25

DATI TECNICI TECHNICAL DATA

Connessioni Fluidi: 1" BSP
Fluid connections

Connessione aria: 8 mm
Air connection

Pressione Max: 8 bar
Max delivery head



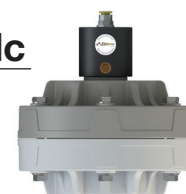
DAW-HQ25 PVDF+CF

LxH 181x195
 kg 2
 Temp. max 95°C
 Temp. min -20°C



DAW-HQ25 POMc

LxH 181x195
 kg 1,9
 Temp. max 80°C
 Temp. min -5°C



**APPLICABILE A:
APPLY TO:**

**PAW-HQ55
PAW-HQ70
PAW-HQ110**

DAW-HQ25 PP

LxH 181x195
 kg 1,6
 Temp. max 65°C
 Temp. min -4°C

DAW-HQ25 AISI

HxLxP(W) 181x182
 kg 6,5
 Temp. max 95°C
 Temp. min -20°C

