

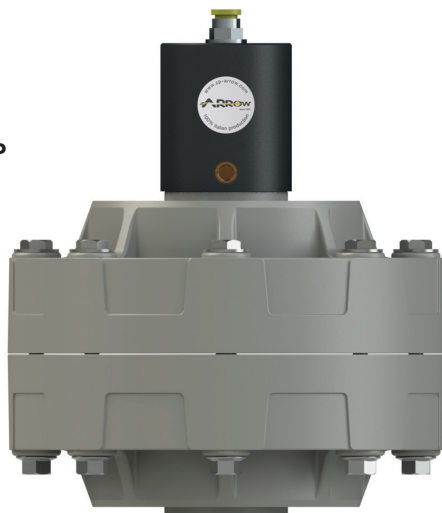
# DAW-HQ40

## DATI TECNICI TECHNICAL DATA

**Connessioni Fluido: 1"1/2 BSP**  
Fluid connections

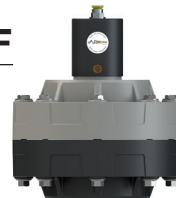
**Connessione aria: 10 mm**  
Air connection

**Pressione Max: 8 bar**  
Max delivery head



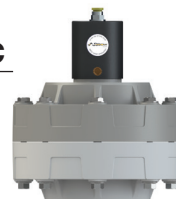
### DAW-HQ40 PVDF+CF

LxH 233x270  
kg 4  
Temp. max 95°C  
Temp. min -20°C



### DAW-HQ40 POMc

LxH 233x270  
kg 3,9  
Temp. max 80°C  
Temp. min -5°C



**APPLICABILE A:  
APPLY TO:**

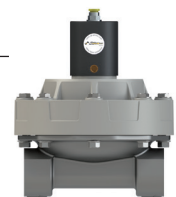
**PAW-HQ170  
PAW-HQ250  
PAW-HQ400**

### DAW-HQ40 PP

LxH 223x270  
kg 3,8  
Temp. max 65°C  
Temp. min -4°C

### DAW-HQ40 AISI

HxLxP(W) 233x275  
kg 5,9  
Temp. max 95°C  
Temp. min -20°C



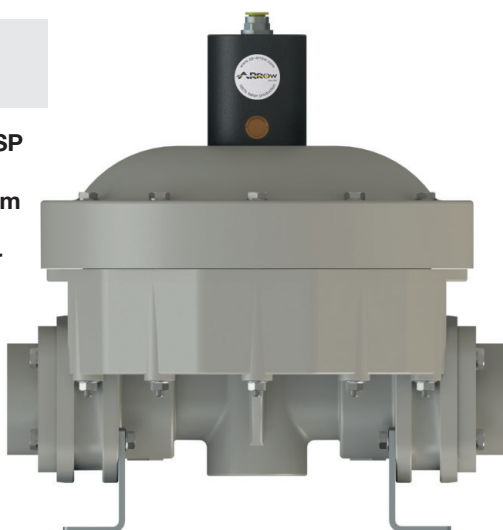
# DAW-HQ50

## DATI TECNICI TECHNICAL DATA

**Connessioni Fluido: 2" BSP**  
Fluid connections

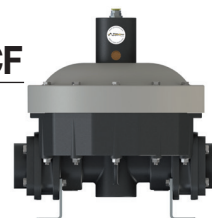
**Connessione aria: 12 mm**  
Air connection

**Pressione Max: 8 bar**  
Max delivery head



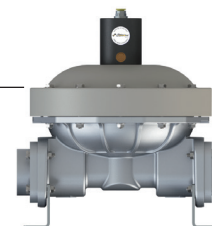
### DAW-HQ50 PVDF+CF

LxH 404x420  
kg 17  
Temp. max 95°C  
Temp. min -20°C



### DAW-HQ50 ALU

LxH 404x420  
kg 14,3  
Temp. max 90°C  
Temp. min -20°C



**APPLICABILE A:  
APPLY TO:**

**PAW-HQ700  
PAW-HQ1000**

### DAW-HQ50 PP

LxH 404x420  
kg 13,7  
Temp. max 65°C  
Temp. min -4°C

### DAW-HQ50 AISI

HxLxP(W) 350x418  
kg 21,6  
Temp. max 95°C  
Temp. min -20°C

